

Buffalo Zoo Educator's Guide

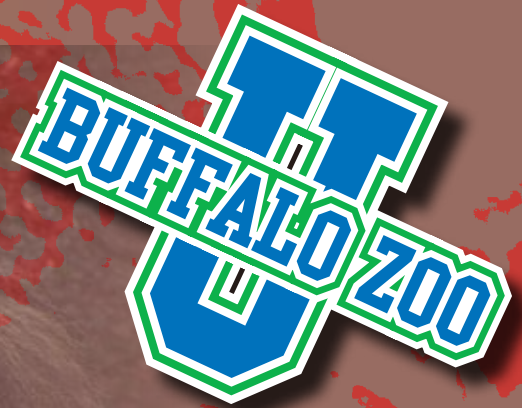


Index

| | |
|--|-----|
| The Mission..... | 1. |
| Learning Standards..... | 1. |
| Zoo Admission..... | 2. |
| Guided Tours..... | 2. |
| Programs for Students with Developmental Disabilities..... | 3. |
| Distance Learning Programs..... | 4. |
| Outreach Programs..... | 6. |
| School Programs..... | 8. |
| Intensive School Programs..... | 9. |
| Home School Programs..... | 10. |
| Teacher Professional Development..... | 10. |
| New York State Common Core Learning Standards..... | 11. |
| New York State Science Learning Standards..... | 12. |



The mission of the Buffalo Zoo's Education Department is to educate, unite and encourage people to become involved in the conservation and preservation of our natural world. In doing so, we offer a variety of educational programs to reach children of all ages!



Learning Standards

The Buffalo Zoo is here to make your job as a teacher easier! Bring your students to the Buffalo Zoo for a WILD variety of affordable, enjoyable and educational possibilities that have been designed to fulfill national and state learning standards. Whether you need us to cover rigorous science topics, ELA and math core curriculum, social studies content, or even art standards – we are here to help! By involving our highly trained staff and volunteers in your next Zoo visit, you will be sure to maximize your group's learning adventure. Please refer to our Learning Standards chart on pages 11 and 12 to see what learning standards are met by each program.



Zoo Admission

Discount Admission

Discount admission rates are available for your school or community group. A 25% discount is available for all orders that are placed and paid for at least three weeks in advance to allow for processing and postal delivery.

A 15% discount is available for schools that are unable to prepay. The 15% discount form must be completed and handed in with payment on your Zoo visit date.

To obtain either the 25% or 15% discount admission form, please call the Presale Department at (716) 837-3900 ext. 156 or download a copy from our website at www.buffalozoo.org.

For our discount admission prices and terms, please visit our website at www.buffalozoo.org.

Guided Tours

Here's a great way to learn more about the Zoo's animals during your visit. Schedule a FREE guided tour led by our Docent educators! You must reserve your tour at least 8 weeks in advance. For more information call the Education Department at (716) 995-6128.

Guided Tours: grades 1-12, adults, 1.5 hours

Before bringing your group to the Zoo, be sure to request a Docent-led guided tour to ensure an even more fulfilling experience! With advance notice, our Docents will even customize the tour to the topics covered by your school or special interest group.

Kinder Tours: grades pre-K-K, 1 - 1.5 hours (as needed)

In this tour we step up to the needs and energy of the younger zoo-goer with age appropriate language, definitions, and those very important rest room stops.



Programs for Students with Developmental Disabilities

Are you looking for a unique experience for students with developmental disabilities? Bring your group to the Buffalo Zoo for a visit geared towards students who need something a little out of the ordinary. If you are interested in any of the following programs, just make us aware of any special needs at the time of booking so we can ensure the teaching session is appropriate for your group.

Sensory Safari: 60 minutes, adaptable grade levels

Bring the Zoo to you! Our Zoomobile will deliver to you a hands-on program that is especially designed for students who are physically and/or developmentally disabled. The focus is sensory enrichment via touch, sight, and sound with both exotic and domestic animals.

Program fee: For pricing and booking details, see page 5

Zoo Trek: 60 minutes, adaptable grade levels

Let us take you on a sensory adventure! Buffalo Zoo staff will lead the trek while engaging visitors with opportunities to see, smell and hear animals from around the world. You will have opportunities to touch biofacts, such as furs and skins, while being surrounded with the natural world.

Program fee: \$95

Animal Senses: 2 hours, Grades K - 6

With the help of live animals, biofacts, animal exhibits and interactive experiments, students with developmental disabilities will explore the five senses and identify the body part used for each sense. They will discover that most animals have the same five senses that we do, and they depend on these senses to communicate, find food and avoid danger.

Program fee: \$195



Distance Learning Programs

Distance Learning programs offer a unique opportunity for students to fulfill learning standards interactively while viewing live footage of animal exhibits, animals, and staff at the Buffalo Zoo without leaving their classrooms! For more information, please call the Education Department at (716) 995-6143.

*Currently all programs will be conducted through IP.

*Grade levels are recommendations only.

Program fee: \$125.00 unless otherwise specified

Program length: 45 minutes unless otherwise specified

Please refer to the Standards Table for all program standards (pages 11 & 12).



Zoo's Clues: preK, 30 minutes

Students will uncover Zoo's Clues that will help them to identify animals while having opportunities for movement as they travel virtually throughout the Zoo.

Animal Classification: grades K-3

By looking at an animal's body structure and body covering, students will discover how scientists can organize the ten million species of animals into groups.

Who's at the Zoo? grades K-3

In this program, students will encounter a variety of animals with body coverings of fur, feathers and scales. They will explore how zoos meet the basic needs of wild animals for food, water, shelter and space.

Wild Winter Animals: grades K-3

Students will observe winter animals and explore how they use clever winter survival strategies such as migration, hibernation, and other amazing adaptations.

SENSE-sational Animals: grades K-6

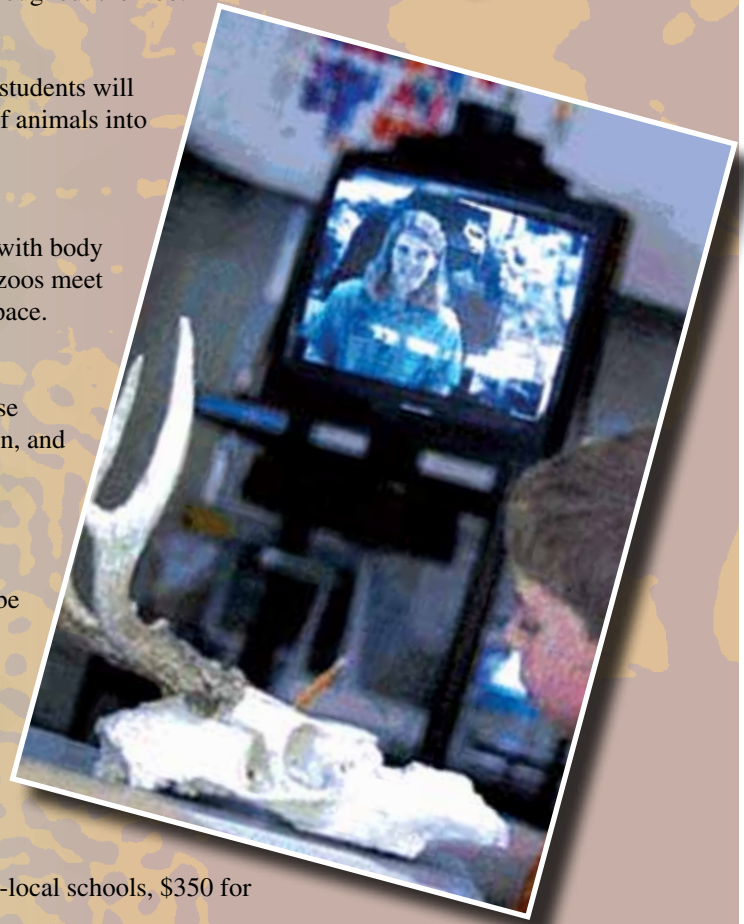
Animals have developed amazing senses, using them much differently than we do. Students will discover what it might be like to be an animal with sensational senses.

Behavior Basics: grades K-8

Students will discover how we can better understand animals by observing their physical characteristics and behavior. They will also learn how zookeepers design enrichment based on their natural behaviors.

Animal Enrichment: grades K-12, 2 sessions, \$250 for non-local schools, \$350 for local schools which includes a culminating trip to the Zoo.

Let your students become scientists as they learn about animal behavior and animal enrichment in zoos. Students will have the opportunity to make specific enrichment items for designated species of animals at the Buffalo Zoo.



Q & A: grades K-12, \$100 for 30 minutes, \$125 for 45 minutes

Get all of your burning questions answered by Zoo experts with topics that are set by you.

The Rainforest Experience: grades 1-7

In this program students discover the importance of the rainforest and consequences of its destruction by covering the layers, sounds, smells, and animals of these vanishing forests.

Habitat Explorers: grades 3-8

Take an adventure around the world and explore animal habitats while uncovering adaptations that enable them to survive in these extreme environments.

Conservation Connection: grades 4-12

During this experience students explore the interconnectedness of the natural world by discussing food webs, endangered species, and zoo conservation.

Gorilla Quest: grades 5-12

In this program students will embark on a Gorilla Quest to learn about gorillas and their behavior, discover behind-the-scenes requirements and missions of modern zoos, and unearth reasons why gorillas and other animals are endangered.

Teacher Workshop: teachers, 30 minutes

Would you like to introduce teachers at your school to videoconferencing and “virtual field trips” as an exciting and interactive learning experience? The Buffalo Zoo can be a part of your teacher training by proving a 30-minute workshop demonstrating our videoconferencing programs.



Outreach Programs

Students of all ages enjoy the unique learning experience offered by our Outreach Programs that can come to your school or function for your convenience. All programs include live animals and are specially tailored to help your students fulfill specific learning standards and objectives.

Please refer to the Standards Table for all program standards (pages 11 & 12).



Zoo Trunk: grades preK-K, 30 minutes, \$50, 10% discount for multiple presentations in the same day.

The Zoo Trunk is the Buffalo Zoo's unique outreach program designed to foster early understanding and appreciation of animals and their way of life. For more information on Zoo Trunk, please call the Education Department at (716) 995-6128.

For the following programs, mileage fees of \$0.50/mi, round-trip will be applied. (\$0.53/mi after January 1, 2018)

Please call our Outreach Programs Specialists at (716) 995-6123 for information.

Zoo "Tails": Storytelling with our favorite animal friends. (Ages PreK - K) [30 minute presentations: 1 Presentation = \$65, 2 = \$117, 3 = \$175, 4 = \$234] (For multiple same-day presentations, the prices reflect a 10% discount off of your total)
This program combines the exciting world of reading with a visit from an animal featured in that story. After reading an animal tale together, we'll learn a little more about that character by exploring biofacts and meeting them live! We would be happy to use a story of your choosing or make suggestions based on the animals available.

Special Events: Large events [1-hour minimum, 4-hour maximum: \$125/hr]

The Buffalo Zoomobile can be booked for picnics, block parties, fairs, carnivals, lawn fetes, conventions, and other functions. The program consists of 4-7 live animals and many touchable biofacts.

The following programs can be adapted to 1st grade and older, unless otherwise specified. Prices for the following programs are based on total audience size:

Groups up to 30 = \$125, Groups 31-100 = \$185, Groups 100+ = \$225

I Love Nature: grades preK-1st, 45-60 minutes

Young children are introduced to the wonders of nature and encouraged to safely and respectfully explore the outdoors. Basic concepts of natural interrelationships and their own role in nature are discussed.

Classic Zoomobile: adaptable grade level, 90 minutes

Students master the adaptations and characteristics of three different classes of animals (mammals, birds, and reptiles). Hands-on experience is vital to the success of this program; therefore, small class size is preferred. One and/or two other animal classes (arthropods, amphibians) can be added for an additional fee of \$40 per station and extra 30 minute running time.

Biomes of the World: adaptable grade level, 90 minutes

Students explore the major biomes of the world, defining their location, climate, plant life, and animal life. One or two other biome stations (tundra/taiga, mountain/urban) may be added for an additional fee of \$40 per station and extra 30 minute running time.

Endangered Species: adaptable grade level (upper grades), 60 minutes

This program helps students master terms such as threatened, endangered, extirpated, and extinct. It focuses on endangered species, reasons they are in danger, and ways we can help save these wonderful creatures.



Tropical Treasures: adaptable grade level, 60 minutes
This program delves into the wonders of tropical rainforests.

A Touch of Class: adaptable grade level, 60 minutes
Students examine the characteristics of birds, mammals, reptiles, arthropods, and amphibians. This is a shortened alternative to the Classic Zoomobile, covering only basic characteristics.

World Safari: adaptable grade level, 60 minutes
This program helps students connect fascinating animals to seven geographic locations for a global understanding of the animal kingdom.

Predator vs. Prey: adaptable grade level, 60 minutes
Students explore the interdependence between predator and prey species, showing why each needs the other to survive.

Magnificent Mammals: adaptable grade level, 60 minutes
Students discover what it takes to be classified as a mammal, what adaptations help them survive, what they eat, where they live, and how they move.

Excellent Ectotherms: adaptable grade level, 60 minutes
This program is crawling with snakes, toads, spiders and much more. It explores the existence of our world's most primitive living terrestrial animals through hands-on interaction.

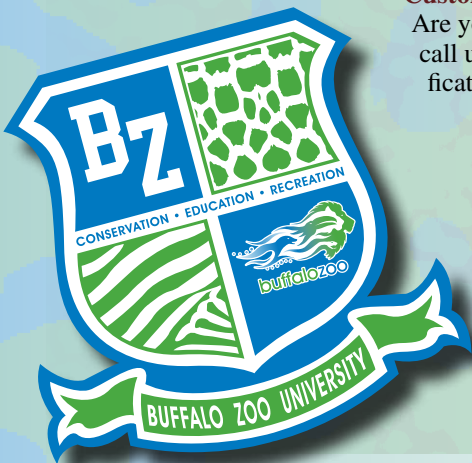
Senior Safari: adults, 60 minutes
This interactive program is geared towards seniors in retirement communities, senior centers and well-elderly facilities. A history of the Buffalo Zoo, little known animal facts, and Zoo memories are presented in a fun game-like atmosphere.

Sensory Safari: adaptable, 60 minutes
This hands-on program is especially designed for senior facilities as well as centers for groups with physical and/or developmental disabilities. The focus is sensory enrichment via touch, sight, and sound with both exotic and domestic animals.

Ecosystem Architects: 5th - 8th grade, multi-session
This unforgettable exhibit design program is an intensive inquiry-based program designed to teach science concepts and skills related to standardized science test topics including: adaptations, needs of living things, biomes, and ecosystems in a unique way. Program includes teacher training, two outreach session in the classroom, and one full day at the Zoo. Cost: \$1275

Save Your Backyard: Grades 4-8, 60 minutes
Students are introduced to the concept of the local watershed and how their actions affect the living things that share our waterways. This program features up to three live local species in decline, and explores positive ways in which students can impact their ecosystem.

Customized: choose your own topic, 60 minutes
Are you a teacher interested in relating a specific science/nature topic to a Zoomobile visit? Please call us at (716) 995-6123 to discuss your goal, and together we will build a program to your specifications.



School Programs

Let us fulfill your standards while you bring your class here to the Zoo! Our inquiry - based curricula take advantage of the Zoo's naturalistic exhibits and give students up-close encounters with live animals. For more information, please call the Education Department at (716) 995-6128.

Program fee: \$100.00 unless otherwise specified

Program length: 45 minutes

Please refer to the Standards Table for all program standards (pages 11 & 12).

Dazzling Defenses: grades K-2

Students first explore their five senses through a variety of sensory "experiments," and then make the connection between senses and animal defenses.

Rainforest Adventure: grades K-4

Students uncover the basics of the tropical rainforest by exploring rainforest layers, investigating animal adaptations, and discovering the forests' abundant resources.

NEW

Arctic Expedition: grades K-12

The Arctic Tundra is home to many amazing animals that are perfectly adapted for life in this harsh environment. Using grade-appropriate methods, we'll learn how these animals' adaptations enable them to survive in the tundra and ways that human-driven climate change are affecting their livelihoods.

What's for Dinner? grades K-8

Through observation and examination, we will discover how predators and prey have unique adaptations for eating or avoiding being eaten.

Food Web Exploration: grades 3-5

Students will explore how plants and animals are linked as components of food chains and food webs while creating their own food web and observing animals at the zoo.

Conservation Investigators: grades 5-8

Students will become Conservation Team Investigators to uncover reasons why animals are endangered and to find out how research can help protect species.

Taxonomic Trek: grades 6-8

Through the use of dichotomous keys and our zoo animals, students embark on a taxonomic trek around the zoo to investigate taxonomy.

Animal Behavior: grades 9-12

While perfecting their own observation skills, students will discover why it is so important for zoologists and psychologists to study animal behavior.

Custom Programs: all grade levels

Do you have a topic in mind that would be perfect for a Zoo visit? Call us to see if arranging a custom program for your class is possible! Price varies depending on length of program and customized needs of the group.



NEW Intensive School Programs

If you're interested in a more in-depth and interactive school program, look no further! These 1.5 hour programs are designed to allow your students to use the Buffalo Zoo as a living laboratory at a much deeper level than our traditional 45 minute presentation.

Program fee: \$200.00; includes live animal demonstrations, exhibit visits, and expert knowledge on a wide range of specialized scientific fields.

Class size: Limited to 26 students and reservations must be made 8 weeks in advance.

Please refer to the Standards Table for all program standards (pages 11 & 12).

Please call the Education Department at (716) 995-6143 for more information.

Animals on Parade: grades K-2

Students will take a memorable tour around the Zoo to practice their observation skills. Along the way, they'll be learning basic math concepts such as counting, adding, subtracting, ordering, sorting, comparing, and measuring with non-standard units. They'll also gather information about which animals have spots, stripes, shells, feathers, fur, and more!

A Zookeeper's Diary: grades 3-5

A zookeeper's life is all about the details! In this program, students will learn about the ins and outs of taking care of our animals all while honing their math and science skills. Weighing diets, recording temperatures, and making precise calculations and observations are a few of the activities students will participate in.

Biome Blitz: grades 4-8

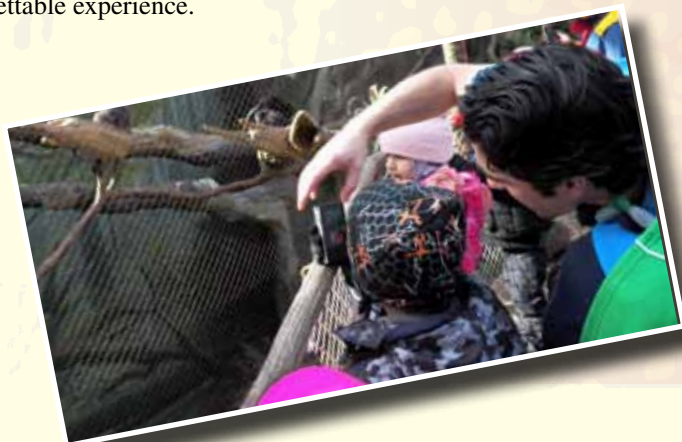
In this program, students will discover the amazing array of biodiversity existing in the world's biomes. Students will learn how we try to replicate these wild places to provide suitable homes for our animals here at the Zoo. By visiting a few of these expertly designed exhibits, we'll compare and contrast the abiotic and biotic features of several biomes and discuss human impacts on their stability.

Evolution and Natural Selection: grades 7-12

Immerse your students in an interactive exploration of evolution and see if they have what it takes to create a creature who will be able to survive! We'll use the Zoo's vast animal collection as a glimpse into the process of evolution through natural selection by identifying common ancestry between related species, homologous structures, convergent and co-evolution, and so much more!

Chemical Warfare in the Animal Kingdom: grades 9-12

This program is not for the squeamish or faint of heart! We'll be looking at ways animals use an assortment of chemicals for defense, obtaining prey, and finding mates. From venoms and poisons that kill to musk and pheromones that entice the senses, students will witness chemistry come to life in this unforgettable experience.



Introducing Extended Science Experiences for grades pre-K – 2!

Extended Science Experiences (ESE's) are designed to help build science content and skill based on a variety of life science topics in the early childhood setting over the course of multiple contacts with the Zoo. Experiences are infused with ELA to foster natural connections between written/spoken words and science. Teachers act as integral partners in the experiences. Each ESE includes teacher professional development, three zoo outreach sessions in your classroom with live animals, and a Zoo field experience.

Topics include:

Pre-K - I Love Nature; Animal Types (classification); Animal Homes/Habitats; Down on the Farm

K – Five Senses; Animal Communication; Changing Seasons/Changing Weather; Taking Care of Our Earth

1st – Animal & Human Body Structure; Needs & Adaptations for Survival; Habitats In Depth; Animal Life Cycles

2nd – Arthropod/Insect Life Cycles In Depth; Animal & Human Health/Nutrition; Food Chains; Ways Humans Change & Help the Environment

Please call the Buffalo Zoo Education Department at (716) 995-6138 for more information and pricing.

Home School Programs

The Buffalo Zoo offers unique monthly homeschool classes for students to experience the world of animals like a real naturalist! Classes will focus on a different topic each month and include hands-on, live animal encounters or guided Zoo tours. For more information, please call the Education Department at (716) 995-6143.

Ages 5 - 7

Program fee: \$10 for members (*Per Class*)
\$12 for non members (*Per Class*)

Program length: 60 minutes

Ages 8 - 11

Program fee: \$12 for member (*Per Class*)
\$14 for non-member (*Per Class*)

Program length: 90 minutes



Teacher Professional Development

Come to the Zoo and learn how you can fulfill your classroom standards through fun and engaging activities for all grade levels! For more information, please call the Education Department at (716) 995-6128.



Customized Workshops

Learn to use the Zoo as an educational resource through customized training designed to meet your specific needs and learning standards.

Days, times and lengths of workshops are arranged to fit with your teaching schedule. Workshops are half days (usually 3 hours).

Workshop Fee: \$25.00 material fees per person

Group Size: The minimum number of participants per session is 8, maximum is 25.

Teacher Center Workshops

Zoo workshops on a variety of topics are scheduled and coordinated in conjunction with teacher centers in districts around Western New York. If you would like more information on which teacher centers are included, or if you would like your teacher center to get involved, please contact us!

New York State Common Core Learning Standards

| | | ELA/Literacy | | | | | MATH | | | | | | | | | |
|-------------------|---|--------------|-------|---------|------------------|-----|---------------|-----|-------|-------|----|---------|------------|------------|----------|----------|
| | | RL | RI | SL | W | L | CC | OA | MD | G | NF | HSN-Q.A | HAS.RE.I.A | HAS.RE.I.B | HSS.ID.A | HSS.ID.C |
| Distance Learning | Grades | | | | | | | | | | | | | | | |
| | The Rainforest Experience | | 7 | 2,3,6 | | 6 | | | | | | | | | | |
| | Animal Enrichment | | 7 | 2,3,6 | | 6 | | | | | | | | | | |
| | Conservation Connection | | 7 | 2,3,6 | | 6 | | | | | | | | | | |
| | Q&A | | 7 | 2,3,6 | | 6 | | | | | | | | | | |
| | Gorilla Quest | | 7 | 2,3,6 | | 6 | | | | | | | | | | |
| | Behavior Basics | | 7 | 2,3,6 | | 6 | | | | | | | | | | |
| | SENSE-ational Animals | | 7 | 2,3,6 | | 6 | | | | | | | | | | |
| | Animal Classifications | | 7 | 2,3,6 | | 6 | | | | | | | | | | |
| | PreK-K | | 7 | 2,3,6 | | 6 | | | | | | | | | | |
| Zoo's Clues | Who's at the Zoo? | | 7 | 2,3,6 | | 6 | | | | | | | | | | |
| | Wild Winter Animals | | 7 | 2,3,6 | | 6 | | | | | | | | | | |
| | Habitat Explorers | | 7 | 2,3,6 | | 6 | | | | | | | | | | |
| | | | | | | | | | | | | | | | | |
| School Programs | Grades | | 7 | 2,3,6 | | 6 | | | | | | | | | | |
| | Arctic Expedition | | 7 | 2,3,6 | | 6 | | | | | | | | | | |
| | Dazzling Defenses | | 7 | 2,3,6 | | 6 | | | | | | | | | | |
| | Food Web Explorations | | 7 | 2,3,6 | | 6 | | | | | | | | | | |
| | Conservation Investigators | | 7 | 2,3,6 | | 6 | | | | | | | | | | |
| | Taxonomic Trek | | 7 | 2,3,6 | | 6 | | | | | | | | | | |
| | Animal Behavior | | 7 | 2,3,6 | | 6 | | | | | | | | | | |
| | What's for Dinner? | | 7 | 2,3,6 | | 6 | | | | | | | | | | |
| | Rainforest Adventure | | 7 | 2,3,6 | | 6 | | | | | | | | | | |
| | | | | | | | | | | | | | | | | |
| Outreach | Grades | | | | | | | | | | | | | | | |
| | Zoo Trunk | | | 1,2,3 | | 6 | | | | | | | | | | |
| | PreK-K | 1,7,10 | | 1,2,3 | | 3,6 | | | | | | | | | | |
| | PreK-1 | | | 1,2,3 | | 3,6 | | | | | | | | | | |
| | Classic Zoomobile | | | 1,2,3 | | 3,6 | | | | | | | | | | |
| | Biomes of the World | | | 1,2,3 | | 3,6 | | | | | | | | | | |
| | Endangered Species | | | 1,2,3 | | 3,6 | | | | | | | | | | |
| | Tropical Treasures | | | 1,2,3 | | 3,6 | | | | | | | | | | |
| | A Touch of Class | | | 1,2,3 | | 3,6 | | | | | | | | | | |
| | World Safari | | | 1,2,3 | | 3,6 | | | | | | | | | | |
| Zoo Tech | Grades | | | | | | | | | | | | | | | |
| | Biomes | | 7,10 | 2,5 | 2,4,6,7,8,9,10 | | | | | | | | | | | |
| | Deadly Chemistry | | 7,10 | 1,2,5 | 2,4,5,6,7,8,9,10 | | | | | | | | | | | |
| | Evolution | | 7,10 | 1,2,5 | 2,4,5,6,7,8,9,10 | | | | | | | | | | | |
| | Animal Safari | | 7 | 2,4,5,6 | | 6 | 1,2,3,4,5,6,7 | 1,2 | 1,2,3 | 1,2,5 | | | | | | |
| | Zoo Math | | 3,4,7 | 1,2,4,5 | 2,7,8,9 | | | | | | 5 | | | | | |
| | | | | | | | | | | | | | | | | |
| | | | | | | | | | | | | | | | | |
| | | | | | | | | | | | | | | | | |
| | Programs for Students with Developmental Disabilities | Grades | | | | | | | | | | | | | | |
| Sensory Safari | | | | 1,2,3 | | 6 | | | | | | | | | | |
| Zoo Trek | | | | 1,2,3 | | 6 | | | | | | | | | | |
| Animal Senses | | | | 1,2,3 | | 6 | | | | | | | | | | |

New York State Science Learning Standards

| Distance Learning | Grades | LS1 | LS2 | LS3 | LS4 | ESS1 | ESS2 | ESS3 | ETS1 | PS1 | PS3 |
|--|---------------|---------------|-----------------|-------|-------------|------|---------|-------------|---------|-----|-----|
| The Rainforest Experience | 1-7 | 1,2,3,6,8 | 1,2,3,4,5 | | 1,2,3,4,5,6 | 1 | 1,2 | 1,3,4,5 | | | 1,2 |
| Animal Enrichment | K-12 | 1,2,3,6,8 | 1,2,3,4,5,6,7,8 | | | | | | | | |
| Conservation Connection | 4-12 | 1,2,3,6,8 | 1,2,3,4,5,6,7,8 | | 1,2,3,4,5,6 | | | 1,2,3,4,5,6 | | 3 | |
| Q&A | K-12 | 1,2,3,4,5,6,8 | 1,2,3,4,5,6,7,8 | 1,2,3 | 1,2,3,4,5,6 | | 1,2,4,7 | 1,2,3,4,5,6 | | 3 | 1,2 |
| Gorilla Quest | 5-12 | 1,2,3,6,8 | 1,2,3,4,5,6,7,8 | 1,2,3 | | | | 1,3 | | | |
| Behavior Basics | K-8 | 1,2,3,6,8 | 1,2,3,4,5 | | 2 | | | 1 | | | |
| SENSE-ational Animals | K-6 | 1,2,3,6,8 | 1,2,3,4,5 | | | | | 1 | | | |
| Animal Classifications | 1-5 | 1,2,3 | 1,2,3,4,5 | 1,2 | 2,3 | | | 1 | | | |
| Zoo's Clues | PreK-K | 1,2 | | | | | | | | | |
| Who's at the Zoo? | K-3 | 1,2 | 1,2 | | | | | | | | |
| Wild Winter Animals | K-4 | 1,2 | 1,2 | | 2,3 | | 1,2 | 1,3 | | | |
| Habitat Explorers | 3-8 | 1,2,3,4,5,6,8 | 1,2,3,4,5 | | 1,2,3,4,5,6 | 1 | 1,2 | 1,3,4,5 | | 3 | 1,2 |
| School Programs | Grades | | | | | | | | | | |
| Arctic Expedition | K-12 | 1,2,3,6,8 | 1,2,3,4,5,6,7,8 | | 1,2,3,4,5,6 | 1 | 1,2,4,7 | 1,2,3,4,5,6 | | 3 | 1,2 |
| Dazzling Defenses | K-2 | 1,2 | | | 2,3 | | | 1,3 | | | |
| Food Web Explorations | 3-5 | 1,2 | 1,2,3,4,5 | | 1,2,3 | | | 1,3 | | | 1,2 |
| Conservation Investigators | 5-8 | 1,2,3,6,8 | 1,2,3,4,5 | | 1,2,3,4,5,6 | | | 1,3,4,5 | | 3 | |
| Taxonomic Trek | 6-8 | 1,2,3,6,8 | 1,2,3,4,5 | | 2,3 | | | | | | |
| Animal Behavior | 9-12 | 2,3,4,5,6,8 | 1,2,8 | | | | | 1 | | | |
| What's for Dinner? | K-8 | 1,2,3,5,6,8 | 1,2,3,4,5 | | 2,3 | | | 1,3 | | | 1,2 |
| Rainforest Adventure | K-4 | 1,2 | 1,2 | | 1,2,3,4 | 1 | 1,2 | 1,3 | | 3 | 1,2 |
| Intensive School Programs | Grades | | | | | | | | | | |
| Biome Blitz | 4-8 | 1,2,3,4,6,8 | 1,2,3,4,5 | | 1,2,3,4,5,6 | 1 | 1,2 | 1,3,4,5 | 1,2,3,4 | 3 | 1,2 |
| Chemical Warfare in the Animal Kingdom | 9-12 | 2,3,8 | 2,3 | | | | | | 1,2,3,4 | 11 | |
| Evolution & Natural Selection | 7-12 | 2,3,4,5,6,8 | 1,2,3,4,5,6,7,8 | 1,2,3 | 1,2,3,4,5,6 | | | 1 | 1,2,3,4 | | |
| Animals on Parade | K-2 | 1,2 | | | 2 | | | 1 | 2 | | |
| A Zookeeper's Diary | 3-5 | 1,2 | 1,2,3,4,5 | | | | | | 2 | | |
| Extended Science Experiences | PreK-2 | 1,2 | 1,2 | | 2,3 | 1 | 1 | 1,3 | 2 | | |
| Zoomobile | Grades | | | | | | | | | | |
| Zoo Trunk | PreK-K | 1,2 | | | | | | | | | |
| Zoo "Tails" | PreK-K | 1,2 | | | | | | | | | |
| I Love Nature | PreK-1 | 1 | | | | | 2 | 1,3 | | | |
| Classic Zoomobile | 1-12 | 1,2,4 | 1 | 1 | 1,2,3,4 | | | | | | |
| Biomes of the World | 1-12 | 1,2,8 | 1,2,3,4,5 | | 1,2,3,4,5,6 | | 1,2 | | | | |
| Endangered Species | 1-12 | 1,2,5 | 1,2,3,4,5,6,7,8 | | 1,3,4 | | | 4 | | | |
| Tropical Treasures | 1-12 | 1,2,4,5 | 1,2,5 | | 1,3 | | | 4 | | | |
| A Touch of Class | 1-12 | 1,2,4 | 1 | 1 | 1,2,3,4 | | | | | | |
| World Safari | 1-12 | 1,2 | 2 | 2 | 1,3,4 | 1 | 2,3 | | | | 1,2 |
| Predator vs. Prey | 1-12 | 1,2,4,6 | 1,2 | | 3,4 | | | | | | |
| Magnificent Mammals | 1-12 | 1,2,4 | 1 | 1 | 1,2,3,4 | | | | | | |
| Excellent Ectotherms | 1-12 | 1,2,4 | 1 | | 1,2,3,4 | | | | | | |
| Winged Wonders | 1-12 | 1,2,4 | 1 | 1 | 1,2,3,4 | | | | | | |
| Sensory Safari | 1-12 | 1,2,3 | | | 1,2,3 | | 1,2,4 | | | | |
| Save Your Backyard | 4-8 | 1,2,5 | 2,3,4,5 | | | | | 1,3,4 | | | |
| Ecosystem Architects | 4-6 | 1,2,3,4,5,6,8 | 1,2,3,4,5 | 1,2 | 1,2,3,4,5,6 | 1 | 1,2 | 1,3,4,5 | 1,2,3,4 | 3 | 1,2 |
| Programs for Students with Developmental Disabilities | Grades | | | | | | | | | | |
| Sensory Safari | 1-12 | 1,2,3 | | | 1,2,3 | | | | | | |
| Zoo Trek | K-12 | 1,2,3 | | | 2,3 | | | | | | |
| Animal Senses | K-6 | 1,2,3,8 | | | 2 | | | | | | |

Notes:





buffalozoo

300 Parkside Avenue
Buffalo, NY 14214
716-837-3900
www.buffalozoo.org